

20
23

I
M
P
A
C
T

R
E
P
O
R
T

CHARTING NEW PATHS

Purpose & Progress in 2023



MILE HIGH
YOUTH CORPS

IMPACT IN FOCUS

Mile High Youth Corps is a nonprofit powered by a network of young adults ages 18-24 who are justice-focused, committed to creating sustainable communities, and pursuing a meaningful path to career success. As a leader in positive youth development, workforce development and community-based service, our Youth Corps completes conservation, construction and healthcare projects across 24 Colorado counties.

2023 saw 296 service positions filled by 258 Corpsmembers participating in career pathway programs focused on land conservation, energy and water conservation, construction, and health and wellness. MHYC was able to serve 32 more Corpsmembers than in 2022. Youth are increasingly looking for opportunities to participate in training that provides sustainable career pathways; in 2023, MHYC received 1,490 applications from prospective Corpsmembers for its 296 open positions.

All MHYC Corpsmembers earned a stipend, earned certifications, participated in hands-on work based learning, received supportive services, and received education in the following areas: career readiness training, healthy lifestyles, civic engagement, leadership development, social justice, and environmental education.

MISSION

**HELP YOUTH MAKE A
DIFFERENCE IN THEMSELVES
AND THEIR COMMUNITY
THROUGH MEANINGFUL
SERVICE OPPORTUNITIES
AND EDUCATIONAL
EXPERIENCES.**

VISION

**YOUTH ARE EMPOWERED
TO SERVE, STEWARD,
AND SUCCEED.**



FROM OUR BOARD

As we reflect on the past year, we are proud to say that it has been a year of purpose and progress for Mile High Youth Corps. From the foothills of Gilpin and Jefferson County to the Eastern Plains of Colorado, we charted new paths in the pursuit of creating meaningful change in our communities and the world today.

The pursuit of meaningful change has been the heart of our mission. Through the courage of our Corpsmembers, the dedication of our staff, and the invaluable support of our partners, MHYC was able to fulfill its purpose this year by completing 114,862 hours of service, earning over 430 professional certifications and positively impacting the environment and people of 24 Colorado counties.

Whether in the fields of land conservation, energy sustainability, construction, or health and wellness, each Corpsmember took bold steps to chart new career paths and embarked on a journey rooted in the belief that their work would contribute to a brighter, more sustainable future. It has been a year where our Corpsmembers have not just served their communities, but transformed them, bringing purpose to every action they took.

As we look to the year ahead, we remain deeply committed to supporting our Corpsmembers and expanding their pathways toward fulfilling careers. Together, we continue to chart new paths—paths of opportunity, sustainability, and meaningful impact.

We are honored to have you alongside us on this journey and grateful for your trust and support.

Sincerely,

Mike Smith
CHAIR, MILE HIGH YOUTH CORPS BOARD OF DIRECTORS





AT A GLANCE

LAND CONSERVATION

A total of 176 youth participated in the Land Conservation program, with 72 out of the Southern Front Range (SFR) office, and 104 out of the Denver office. MHYC continues to prioritize youth and career development alongside the valuable conservation services that Land Corpsmembers deliver.

This year, Corpsmembers received additional Career Readiness Training throughout their terms of service. MHYC's Supportive Services Team worked with program staff to identify opportunities for youth to participate in trainings such as Networking and Speed Interviewing, Career Panels, Career Fairs, Resume Building, and more. Program staff have also worked to restructure the in-field programming and education model in order to build more variety and flexibility into the model.

MHYC's education program consists of six core areas: Social Justice, Leadership Development, Civic Engagement, Healthy Lifestyles, Career Readiness, and Environmental Stewardship. All Corpsmember training and educational activities focus on one, if not more, of these six core areas.

114,862

HOURS OF SERVICE

322

ACRES OF LAND IMPROVED

61

MILES OF TRAILS & RIVERS IMPROVED

18,822

TREES REMOVED FOR FIRE MITIGATION



AT A GLANCE

ENERGY & WATER CONSERVATION

MHYC has expanded the career pathway opportunities for Corpsmembers in the Energy & Water program through the provision of new supplemental training certifications available after completion of five core program certificates. The core certifications include CPR/ First Aid; Defensive Driving; OSHA-10 General Industry; Sustainability Excellence Associate; and Building Science Principles.

MHYC identified six areas of focus to categorize these trainings, which Corpsmembers are free to choose from: Green Building; Water; Renewable Energy; Sustainability/Compliance; Outdoor Conservation; and Outdoor Education. Beyond these offerings, staff continue to support Corpsmembers to research and identify additional trainings that will develop their resume and career prospects.

922

LOW-INCOME HOMES
RETROFITTED TO INSTALL ENERGY
CONSERVATION MEASURES

12 MILLION+

GALLONS OF
WATER SAVED

495,000

KWH ENERGY SAVED

\$397,202

IN AMERICORPS EDUCATION
AWARD FUNDS RECEIVED
ACROSS PROGRAMS



“YOU KNOW
YOU’LL LEARN
THINGS THAT
YOU NEVER
THOUGHT YOU’D
BE DOING.”

AT A GLANCE

YOUTHBUILD

MHYC was able to serve a total of 60 youth participants through the YouthBuild program via 3 cohorts in 2023. Of the youth served, 23 have successfully completed the program and 27 are still enrolled through 2024, resulting in an 83% retention rate. 14 Corpsmembers earned their High School Equivalency diploma, 21 received an industry recognized certification (Pre-Apprenticeship Certificate Training or Certified Nurse Aide), and 17 earned a combined total of \$23,964 in AmeriCorps education awards.

821

LOW-INCOME COMMUNITY
MEMBERS & COMMUNITY
MEMBERS WITH AUTO-
IMMUNE DISEASES SERVED

430+

CERTIFICATIONS
EARNED ACROSS
PROGRAMS



CORPSMEMBER STORY

“In 2022, I started with MHYC as an LCL (Land Conservation Leader) and was very hesitant about the value I could bring to an already knowledgeable team. I had never done anything like this before but immediately found myself supported by the mentors and staff around me. I had never been at a job where I enjoyed showing up each day but I enjoyed it so much that I decided to come back as a Program Mentor. MHYC has allowed me to grow into a better leader and gain experience working on different projects. In my new role, I’m excited to improve the program and impact the Corpsmembers’ experience in a positive way. Working with MHYC has made me realize that I was capable of more than I thought and showed me the importance of always having a growth mindset.”

-JOSEPH OTERO, 2023 SFR LAND CONSERVATION PROGRAM MENTOR

IMPACT TO YOUTH

86%

SUCCESSFULLY COMPLETED THEIR TERM OF SERVICE

81%

WERE PLACED IN POST-SECONDARY EDUCATION OR EMPLOYMENT

86%

EARNED AN AMERICORPS EDUCATION AWARD TO BE USED TOWARDS POST-SECONDARY EDUCATION

96%

SAID THEY FELT A SENSE OF BELONGING AT MHYC

100%

SAID THAT MHYC HAD A POSITIVE IMPACT ON THEIR LIFE AND FUTURE





MOVING FORWARD

RECRUITMENT & RETENTION

MHYC was able to exceed the organization's 2023 recruitment goal utilizing data analysis and reflection from previous years, resulting in more local youth being served across all program pathways. All board and staff have been intentionally trained on updated language and new messaging platforms, resulting in an increase in MHYC's social media presence. MHYC has also been able to deepen capacity of program staff by adding Program Managers for the YouthBuild and Energy & Water Conservation programs. This will facilitate intentional cross training and collaboration for all Corpsmembers, which will also benefit equity and completion goals across the organization. Finally, all MHYC staff were engaged in extensive DEI affinity groups from an external facilitator in 2023. These groups have allowed for more robust conversation and problem solving as staff continue to unpack how race impacts every single aspect of a Corpsmembers' journey at MHYC, and the organization's obligation to removing these barriers when possible.

PARTNERSHIPS

This year MHYC hosted the U.S. Forest Service International Youth Conservation Corps (YCC) study tour. YCC representatives from Morocco, Egypt and Lebanon, along with Kristin Schmitt from the USFS National Partnerships Office in DC, were provided with a tour of MHYC headquarters, an overview of MHYC programs and operations, and a site visit with MHYC's Trailblazer crew at Standley Lake, a reservoir in Westminster, CO: "Everyone enjoyed learning about all of the programs, logistics, support and operations that your team puts into a successful corps program. We had a great time out on the project meeting Corpsmembers and seeing outstanding crew leadership in action." – Kristin Schmitt

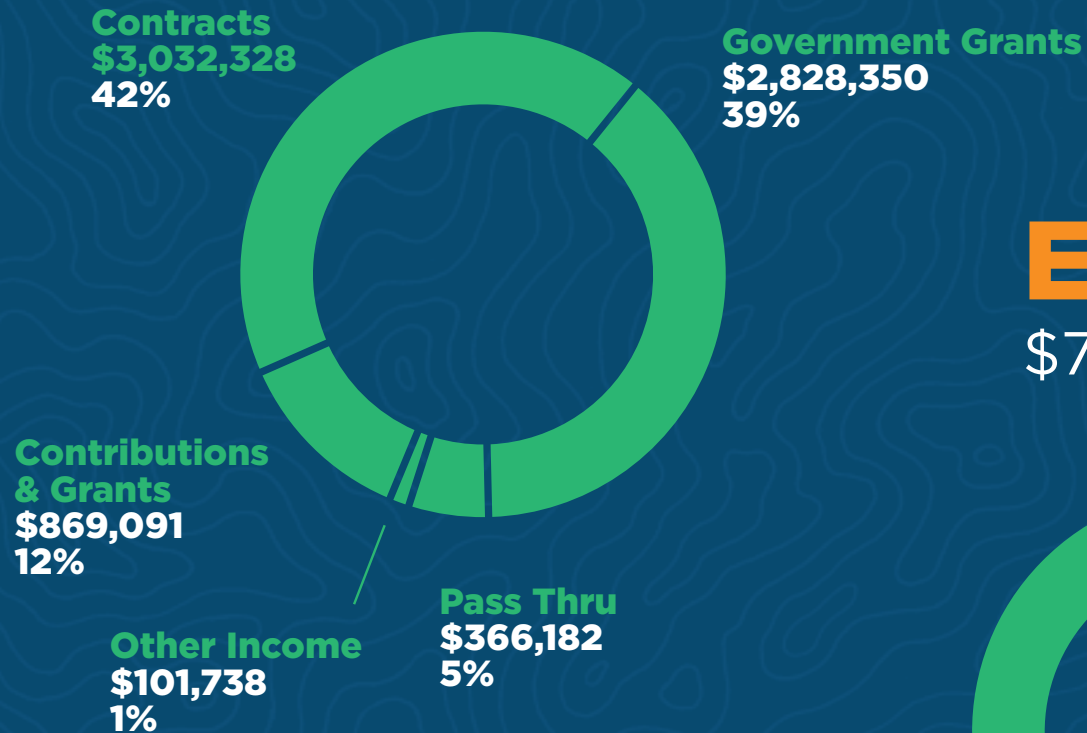
"THE CREW WAS SO WONDERFUL AND HARDWORKING. CONTINUED TO WORK HARD EVEN THROUGH TOUGH DAYS. THEY WERE SUCH A JOY TO WORK WITH AND GET TO KNOW!"

CASSIE ROGERS, FIELD COORDINATOR AT ROCKY MOUNTAIN FIELD INSTITUTE



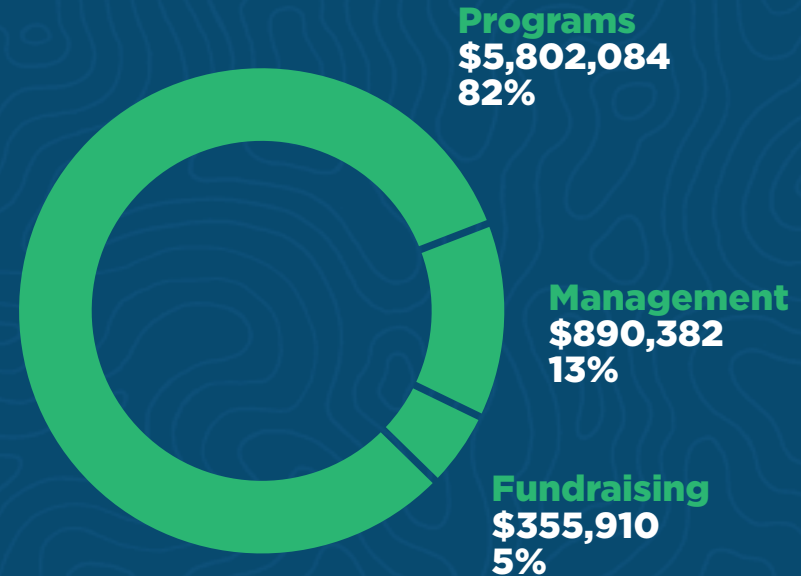
Revenue

\$7,197,689



Expenses

\$7,048,376





- A Precious Child
- Ability Connection Colorado
- Adams County Parks, Open Space, & Cultural Arts Department
- AmeriCorps
- Arapahoe County Open Spaces
- Arkansas River Watershed Collaborative
- Aspen Valley High School
- Association of General Contractors
- Atrevida Brewery
- Aurora Water
- Barr Lake State Park
- Battle Mountain Brewery
- Beaver Creek State Wildlife Area
- Bergen Peak State Wildlife Area
- Bevara
- Black Forest Community Center
- Bluff Lake Nature Center
- Bobcat of the Rockies
- Boulder Ranger District (US Forest Service)
- Boulder Watershed Collective
- Boys and Girls Club of Metro Denver
- BuCu West
- Bureau of Land Management:
 - Royal Gorge Field Office
- Café 180
- Cañon City Area Metropolitan Recreation and Park District
- Castlewood Canyon State Park
- Catamount Institute
- Central Colorado Mountain Riders
- Cheyenne Mountain State Park
- CHIC
- City and County of Broomfield
- City and County of Denver Parks & Recreation
- City of Aurora Parks, Recreation & Open Space Department
- City of Boulder Climate Initiatives
- City of Boulder Open Space & Mountain Parks
- City of Colorado Springs
- Downtown Partnership
- City of Colorado Springs Parks, Recreation and Cultural Services
- City of Lakewood
- City of Manitou Springs
- City of Trinidad
- City of Westminster
- City of Westminster Parks, Recreation, and Libraries
- City of Wheat Ridge Parks, Forestry and Open Space
- Clear Creek Ranger District (US Forest Service)
- Colorado Agrivoltaic Learning Center
- Colorado Alliance for Environmental Education
- Colorado Attorney General's Office
- Colorado College
- Colorado Department of Natural Resources
- Colorado Department of Public Health and Environment
- Colorado Finishing Trades Institute
- Colorado Firecamp
- Colorado Health Corps
- Colorado Low Income Energy Assistance Program
- Colorado Open Lands
- Colorado Parks and Wildlife
- Colorado Sheet Metal Workers Apprentice Program
- Colorado Springs Health Foundation
- Colorado State University Expanded Food & Nutrition Education Program
- Colorado Strategic Wildfire Action Program
- Colorado Water Conservation Board
- Colorado Workforce Development Council State Youth Council
- Colorado Youth Corps Association
- Colorado Youth for a Change
- Community College of Denver
- Concrete Couch
- Conservation Colorado
- Conservatory Green High School
- CORE Partners/WORKNOW
- Council of Neighbors and Organizations
- Craig Hospital
- Craig's Power Equipment
- Denver Dream Center
- Denver East High School
- Denver Economic Development & Opportunity
- Denver Food Rescue
- Denver Health
- Denver Housing Authority
- Denver Human Services' Youth Empowerment Program
- Denver Joint Electrical Apprenticeship Training Committee
- Denver Office of Climate Action, Sustainability, Resiliency
- Denver Office of Nonprofit Engagement
- Denver Parks and Recreation
- Denver Pipefitters Local 208
- Denver Probation
- Denver Santa Claus Shop
- Denver Water
- Denver Workforce Development Board & Youth Committee
- Denver Workforce Integration Network
- Denver Workforce Services
- Department of Reclamation, Mining and Safety
- Discovery High School
- Diva Cup
- Division of Reclamation, Mining and Safety
- Douglas County Conservation District
- Douglas County Fairgrounds
- Douglas County Open Space & Natural Resources
- EarthLinks
- E-Creek
- Educational Opportunity Center at the Community College of Denver
- Eldorado Canyon State Park
- Emerson St. a program of WellPower
- Emily Griffith High School
- Emily Griffith Technical College
- Energy Outreach Colorado
- Environmental Learning for Kids
- Evergreen Fire/Rescue
- Family Tree



Fire Adapted Colorado
 Fishers Peak State Park
 Fiskars
 FleetPool
 Food Bank of the Rockies
 Food to Power
 Forge Evolution
 Fountain Creek Watershed District
 Friends of Ute Pass Trails
 Front Range CPR
 Generation Wild – Pikes Peak Region
 Genese Foundation
 Global Machinery
 Golden Gate Canyon State Park
 Goodwill of Denver
 Great Outdoors Colorado
 GRID Alternatives
 Groundwork Denver
 Grow Local
 Guardians of Palmer Park
 Habitat for Humanity ReStore
 Harrison High School
 HD Supply
 Heart and Hand Center for Youth
 and Their Families
 Hickman Trailer
 High Line Canal Conservancy
 Historic Green Mountain Falls
 Foundation
 HistoriCorps
 Hugo State Wildlife Area
 I-kota
 Inside Out Youth Services
 Institute for the Built Environment
 International Union of Painters and
 Allied Trades District Council 81
 James M. John State Wildlife Area
 Janus Henderson
 JeffCo Eats
 Jefferson Conservation District
 Jefferson County Open Space
 John Martin Reservoir State Park
 Kenny Electric
 KeyBank
 Kinship Landing
 Kirkpatrick Family Fund
 KPMG Data Citizens with Purpose
 Lake Pueblo State Park

Lakewood Probation
 Las Animas County Fairgrounds
 Lathrop State Park
 Leave No Trace
 Lifespan Local
 Lucky to Ride
 MEDIC SOLO WFA
 Metric Brewing
 Metro Caring
 Mi Casa Resource Center
 Mile High Youth Thrive YVP
 Coalition
 Mile High 360
 Montview: Middle and High School
 Mount Evans Outdoor Lab
 MSU Denver
 MTech Mechanical
 My Outdoor Colorado Coalition
 Mueller State Park
 Namaste Solar
 National Alliance on Mental Illness
 National Forest Foundation
 National Park Foundation
 National Park Service: Florissant
 Fossil Beds National Monument
 Native Governance Center
 Northeast Metro Coalition
 Nurse Family Partnership
 Old Town Bike Shop
 Open Door
 Owen Boys and Girls Club
 Palace Construction
 Palmer Land Conservancy
 Patriot High School
 Pikes Peak BOCES – School to
 Work Alliance Program
 Pikes Peak Business and Education
 Alliance
 Pikes Peak Outdoor Recreation
 Alliance
 Pikes Peak Ranger District
 (US Forest Service)
 Pikes Peak State Wildlife Area
 Pikes Peak United Way
 Pikes Peak Workforce Center
 Pike Ride
 Polsinelli
 Preservation Tree Care

Project Foster Power
 Pueblo State Fish Hatchery
 Purgatoire Watershed Partnership
 Ramah State Wildlife Area
 Realizing Aptitudes
 Red Rocks Community College
 REI
 RK Mechanical
 Rocky Mountain Arsenal National
 Wildlife Refuge
 Rocky Mountain Field Institute
 Rocky Mountain Multiple
 Sclerosis Center
 Rocky Mountain Youth Corps
 Roundup Riders of the Rockies
 Roxborough State Park
 Russell Square Park
 Salida Ranger District
 (U.S. Forest Service)
 San Carlos Ranger District
 (US Forest Service)
 Sandcreek Regional Greenway
 Partnership
 Serve Colorado
 Service Year Alliance
 Servicios de la Raza
 Sheridan High School
 Sheridan Inspire Coalition
 Shiloh House
 Shrewsbury Construction
 Souls 4 Soles
 Southern Colorado Trail Builders
 South Platte Ranger District
 (US Forest Service)
 South Suburban Parks and
 Recreation District
 Southwest Denver Coalition
 Spirit of the Sun
 Spring Creek Youth Services
 Sprout City Farms
 St. Joseph Hospital
 STRIVE Prep Charter Schools
 Struggle of Love
 Sun Valley Community Coalition
 Sun Valley Kitchen & Community
 Center
 Sun Valley Youth Center
 The Action Center

PARTNERS

The Corps Network
 The Davey Tree Expert Company
 The Ember Alliance
 The Opus Group
 The Place Colorado Springs
 The Urban Farm
 The Village Institute
 Tire World
 Tony Grampas Youth Services
 Town of Green Mountain Falls
 Trails and Open Space Coalition
 Trinidad Lake State Park
 TruNorth
 U.S. Fish & Wildlife Service
 Unite Colorado
 United Airlines
 University of Colorado Boulder
 University of Colorado Denver
 University of Colorado Springs
 University of Denver
 Unite Us
 VF Foundation
 Villa Park Neighborhood
 Association
 Volunteers for Outdoor Colorado
 Volunteers of America
 Walls Counseling
 We Don't Waste
 Weifield Group Contracting
 Welsh Electric
 West Colfax Association of
 Neighbors
 Western Colorado Conservation
 Corps
 Westwood Unidos
 Wildland Restorations Volunteers
 Young Invincibles
 YouthBuild USA
 Youth Exploring Stewardship
 Coalition





OUR COMMUNITY OF SUPPORT

FOUNDATION, GOVERNMENT, CORPORATE

\$49,999-\$15,000

Anschutz Foundation
 Colorado Springs Health Foundation
 Denver Housing Authority
 GLP Capital Partners
 Keltner Family Foundation
 Kirkpatrick Family Fund
 Rose Community Foundation
 United Airlines
 Xcel Energy

\$50,000+

AmeriCorps
 Anonymous
 Colorado Department of Education
 Colorado Workforce Development Council
 Denver Broncos
 Denver Economic Development Office
 Colorado Climate Corps
 Colorado Water Conservation Board
 Great Outdoors Colorado
 Opus Foundation
 Serve Colorado
 Tony Grampsas Youth Services
 US Department of Labor
 YouthBuild USA

\$14,999 AND BELOW

American Trails
 Colorado Energy Foundation
 Cross H Foundation
 The Denver Foundation
 El Pomar Foundation
 KeyBank Foundation
 Kum N Go
 McKinstry Charitable Foundation
 MDU Resources Foundation
 Pinnacol Assurance
 Phyllis M. Coors Foundation
 RK Foundation
 Rollie R. Kelley Family Foundation
 Schlessman Family Foundation
 Suncor Energy



INDIVIDUAL DONORS

A Donnee Brito
 Adam Cressman
 Adele & Erwin Gelfand
 Aisha May
 Alan Ray
 Ale & Maria Spray
 Alicia Jean Vagts
 Allen & Beth Ross*
 Allen & Chris Smith
 Allison Olien
 Allyson & Peter Sawtell
 Alyssa Baldi
 Amber Palmeri
 Amy Becker
 Amy Nupen
 Amy Rittenhouse
 Andie Scott
 Andrea Heshmati
 Andrea Loudd
 Andrew Joseph Levy
 Andrew Tighe
 Angelena Gleason
 Ann Hall
 Ann Hendrix
 Ann Johnson
 Ann Morris
 Ann Seanor
 Ann Stokes
 Anna Kuzminsky
 Anna Tjornehoj
 Annabeth Headrick
 Anne Namuth
 Anne Pitts
 Annette Hopkins
 Annie Longley
 Antonio Barreiro
 Arne Jorgensen
 Ashley Garcia
 Audrey Manley
 Audrey Maydew
 Austin Klahn
 Barb Ericson
 Barb Szemak
 Barbara Beverly
 Barbara Cashion

Barbara Deheer
 Barbara Dey
 Barbara Gearke
 Barbara Masoner
 Barbara Noyes
 Barbara Nulty*
 Barbara Pronck
 Bee Yen Png
 Benjamin Casebolt
 Beth Basefsky
 Beth Kern
 Beth Seabolt
 Betty A Rasmussen
 Beverly Blamey
 Billy Blankenship
 Birgit Halbreiter
 Birgit Sabin
 Bob Easton
 Bradley Zike
 Brady Edge
 Brandeberry McKenna
 Brenda Brostrom
 Brenda Kellner
 Brent Arensberg
 Brent McDaniel*
 Brian Edge
 Brian McLaren
 Brigid McRaith
 Brooke Badon*
 Brooke Brown*
 Bruce Johnson
 Bryan Wilky
 Camila Philipp
 Candace Allen
 Cari Smith
 Carla Kier
 Carol Berg
 Carol Graham
 Carol Smoot
 Caroline Farmer
 Carolyn Campion*
 Cassandra-CJ Runge
 Catharine Bambach-
 McKay
 Cathy A Forsythe

Cecelia Bowman
 Cecelia Coleman
 Charles & Lavonne
 Heaviland
 Charles Devor
 Charles N Hackard
 Charles Siehl
 Charles Whittle
 Cheryl Hamilton
 Cheryl Martin
 Cheryl Richardson
 Cheryl Von Sprecken
 Cheryl Wooley
 Chris Groll
 Chris Perkins
 Christie Cody
 Christie Doherty
 Christine G. Hedrick
 Christopher Arend
 Christopher Wagner
 Christy Gallese
 Chuck & Cinda
 Musgrave
 Cindy Weaver
 Claudia J Freeman
 Cliff Shumate
 Colleen M Clohessy
 Colleen Wallace
 Collin D Hoffmann
 Conrad Thomaier
 Cory Greer
 Cory Smith
 Craig & Liane Edge
 Crista M Bailey
 Cristina Ages
 Curtis Drew
 Cynthia Gaertner
 Damodara Kini
 Dan Martinson
 Dana L Plewka
 Danelle Winship
 Darren Call
 Dave & Cathy Dehn

David Addor
 David C Canfield
 David Ferris
 David Fitzgerald
 David H Manting
 David Hogue
 David Holland
 David Holliday
 David Lakes
 David Lohf
 David McLaughry
 David Mugglestone
 David Naulty
 David Sipple
 David Sprunt
 David Takeda
 David Waples
 David Young
 Daxen Brems
 Dayle Jones*
 Daylin Short
 Dean P Ladany
 Deb Brink
 Deb Wykoff
 Debbie Hebbel
 Debbie Pink
 Debby Vigna
 Debora Lutomski
 Deborah Harrington
 Deborah Hockaday
 Deborah L Pelter
 Deborah Lugo
 Deborah Whitlow
 Debra Schmidt
 Debra Stefaniak
 Dee Brinley
 Deirdre Franklin
 Denise Hameister
 Denise Marcouillier
 Denise Quinnell
 Dennis Hanke
 Diana L Baker
 Diana Payne

Diana Wagner
 Diane Dodge
 Diane J Allen
 Dick Paschen
 Don & Danette
 Overdorff
 Don & Pauline
 Davidson
 Don Runyan
 Donald S McKee
 Doris Wigglesworth
 Doug & Diane
 Hutchinson
 Doug Linkhart
 Doug McQuiston
 E R Nollenberger
 Ed Rosenberg
 Edward J Doolos
 Edward Moss
 Edward Rosenberg*
 Edward Swibas
 Elena Martin Hernandez
 Elisabeth David
 Elizabeth Byrne
 Elizabeth Laurvick
 Elizabeth Persons
 Elyanna Sutin
 Emily Holmes
 Emma Hay
 Emma Messett
 Eric Lish
 Eric Lombardi
 Eric Wolaver
 Erica S Mack
 Erik Bernstein
 Eva Stob
 Frank Mondagon
 Frank Skerbetz
 Fred Corn
 Friedrich Kreuch
 Gabriel Cosio
 Gail Heinrich
 Gary Anderson
 Gayle Mulholland
 Gene Gray

Gene Kalesti
 George Delaune
 George Smith
 George Ware
 Gillian Rossi
 Gina Deal
 Gloria Austin
 Gordon hadlow
 Grace Lopez Ramirez*
 Greg & Laura Prinzi
 Gregory Eurich &
 Katy Miller
 Gress Warren
 Gwen Farnsworth
 Halley Gruber
 Happy Haynes
 Harold Bartley
 Hayley Easton Neal*
 Heather Hurd
 Heather J Bryant
 Heather Larrabee*
 Heather McNeilly
 Heidi Fick
 Henry Konker
 Hilary Engelhart
 Hillary Hielt
 Holly W Parker
 Home Wells
 Hope Kadlecek
 Ian Toner
 Inger Barron
 Inger Bull
 Ingrid Lauenstein
 Irene Bindrich
 Irina Larson
 Ivy Hoppe
 Jack Bernhard
 Jack Hindman
 Jackie Dobrovoly
 Jacque Burroughs
 Jaime Avery
 James & JoAnne
 Capecelatro*
 James Brandt
 James Brock



James Callister
James Gano
James Martin
James Nelson
James Osburn
James Thomas
Jan Racey
Jane Paterson
Jane Sutton
Janet Fox
Janet Grimmett
Janet L. Roberts
Janet Scott
Janice Howard
Janice Stephens
Jasmine Martin
Jay Heyer
Jean Campbell &
Patrick Morrissy*
Jean Plotkin
Jeannette Romero
Jeff Dahoda
Jeff Hinrichs
Jeff Shigeno
Jeff Tieman*
Jeffery Anderson
Jeffrey Hillis
Jeffrey Kuenn
Jennifer Dahlberg
Jennifer Dimond
Jennifer Mindala
Jennifer Stokowski
Jennifer Thomson
Jeremy Bayens
Jerome Borison
Jerome Vinet
Jeromy Lease
Jerry Babcock
Jerry Cooke
Jeslin Shahrezaei
& Eugene Rooks
Jesse Roehm
Jessica Wallace
Jill Stevens
Jim Buzbee
Jim McKeen
Joan Adams
Joann Dillow
JoAnn Leung
Joanne Ida
Jodi Klepacki
Jodie Tinucci
Joe & Jean Solis
Joe Scarfarotti
Joe Zemek

Joel Bush
Joel Fraites
Joel Javer*
Joey Dybevik
John A Lockwood
John Campbell
John Connell
John D Fluke
John Forester
John Lanpher
John Pendleton
John Pittman
John Poitevin
John Richards
John Sullivan
Jojo La
Jolene Elliott
Jon & Mary Haacke
Jon Tesseo
Jonathan Lurie
Jonathan Williams
Joseph Salamack
Joseph Ullman
Josh Burkey
Joshua Ewing*
Joshua Larson
Josie & Rollie Heath*
Judi Welch
Judith A Sarro
Judith Creasy
Judith Sorenson
Judy J Over
Judy Mitchell
Julie Marsh
Julie Pecaut
Kara McCarty
Kara Schumacher
Kara Silbernagel
Karen E Newmyer
Karen Friedmann
Karen Gschwind
Karen Hefti
Karen Schmidt
Karen Stran
Karina A Meidinger
Karl Johnson
Karyn Browne &
Ken Seeley
Kate Connor
Katherine Kinsella
Katherine Okon
Kathi Conner
Kathie Burson
Kathie Holmes
Kathleen Fitzgerald

Kathleen McKain
Kathleen
O'Shaughnessy
Kathryn Conyers
Kathryn L Ricketts
Kathryn Rieck
Kathy S Hansen
Kathy White
Katie Lohmiller
Kay D Kerlin
Kaye Scott
Kayla Grayson
Kellie Rainwater
Kelly Causey
Kelly Donahue
Ken & Kelly Recore
Ken Weinert
Kenn Lively
Kenneth Bugosh
Kenneth Gillis
Kenneth J Gauna
Kerri McDaniel
Kerry Webster
Kevin Carney
Kevin McAdam
Kevin McClaury
Kialah Smith
Kim D. Blair
Kim Nelson
Kim Vanhoosier-Carey
Kimberly Anderson
Klaus H. Schaar
Kristen Graham
Kristen L Kent
Kristi Anderson
Kristin Jones
Kristin Munch
Kristin Peoples
Kristina Van Bockern
Kyle Clark
Kyle Henderson &
Mischa Henderson
McGibney*
Lance Gibb*
Lara Galante
Lara Thomas
Larry Strawser
LaShelle Taylor
Laura G Arensberg
Laura Guggenheimer
Laura H Cary
Laura Wrede
Lauren & Dan Buehler
Laurie Safran
Lawrence Adams

Lee Schweickert
Leisha Antionne
Leland Chew
Lene Nichols
Leslie Clemensen
Leslie Pickard*
Libby Ales
Linda Brown
Linda Herbert
Linda Kaiser
Linda L Nothnagel
Linda Meredith
Linda Miner
Linda Sprouse
Linda Strand
Lindsey Cross
Lisa Barker
Lisa Basefsky
Lisa Hascall
Lisa Young
Liz Keltner
Lloyd Kimball
Lorien Walsh
Lorraine Ross
LuAnn Ringenberg
Lyle Luttrell
Lynda Smith
Lynn Snyder Goetz
Lynne Sirpolaidis
M & C Ross
Maggie Bolden
Mallory High
Mandy Christensen
Manny Rodrigues
Mara Erlandson
Margaret Blackmore
Margaret Gellatly
Margot Rode
Maria Capecelatro
Marika Rietsema Ball
Marilyn D Beery
Marilyn Zabilski
Marj Burrows
Marjorie Hofer
Marjorie Horner
Mark Anderson
Mark Koenig
Marla Le Gourrierec
Marla Tobey
Mary Ales
Mary Ann Gabriel
Mary Anne Paul
Mary Rehm
MaryAnn Lucero
Maryann Triebold



INDIVIDUAL DONORS



INDIVIDUAL DONORS

Masami Nakagawa
Matthew Brenn
Matthew Montoya*
Mattie R Carlisle
Maurice Welch
Maurine Nelson
McKenzie Carmack
Megan M Baron
Mel Goldsipe
Melissa & Alexander
Menter
Melissa Cordova
Mia Johnson
Michael Gormley
Michael Hall
Michael Norris
Michael Patrick Smith*
Michael Robnett
Michele Lutz
Michelle Marcu
Miguel Flores
Mikala Sterling
Mikey Smith
Millie Davies
Mira Rubenstein
Mitch Michener
Mohammed Dalabih
Monique Plamondon
Myra Chapman
Nancy Allen
Nancy Bureson
Nancy Cassidy
Nancy Haines
Nancy Hanck
Nancy Lackey
Nancy McCoy
Nancy Primavera
Naomi Folkerts
Natalie Longmire
Nathan Edge
Neal Walters
Nena Walker
Nicolette Parkhill
Nora Parsons
Norberth Stracker
Norm Hecht
Obaro Odoh-Tadafe
Paige Coriden
Pam Giordano
Pamela Cummings
Pamela J Fisher
Pat Wilderotter
Patrice Lynch
Patricia Daniluk
Patricia Dimond

Patricia Estes
Patricia L Scott
Patricia Latta
Patricia McGrew
Patricia Roe
Patrick Nolan
Patty Fisher
Patty Holligan
Paul Dubois
Paul J Harenberg
Paul Musso
Paul Wolff
Paula Smith
Peggy Rogers
Penni McDaniel
Penny Lowry
Penny Sue Hollon
Perry Eckerling
Perry Lengton
Peter Doherty
Peter Ziverts
Quinn Zimmerman
Rachel Gause
Raeburn Bontz
Rafael Veintimilla
Randy Eldridge
Rebecca Holmes
Rebecca J. Bowman
Renee Azerbegi
Rhoda Batchen
Richard Bottner
Richard Meyer
Richard Miller
Rob & Paula Grady
Rob Gillis
Robert Baxt
Robert Egeland
Robert Herrmann
Robert Kirby
Robert Schiffman
Robert Smith
Roberta J Henshaw
Robin Darby
Robin Haugland
Robin Kelly
Robin Nolan
Robyn McKenry
Ron Shuster
Ronald Jensen
Ronald Reynolds
Ronn McConnell
Ruth Gerrity
Ruth Sherman
Ryan Marcon
Ryan Minatta

Ryan Pontious
Ryan Y. Eggelton
Samantha Mooney
Sandra Hergenreder
Sandra Hoppe
Sandra J Michaud
Sandra Wolf
Sara Chatfield
Sara S Farrell
Sarah Bridich
Sarah Mulrooney
Sarah Sappington
Scott Baird
Scott Lewis
Scott Nowlin
Scott Sides
Scott Winfield
Seth Brickner
Sharon Bolles
Sharon Logsdon
Sharon Warren
Sheila Tomasek
Shelley Cox-Diegel
Sheri Dethlefs
Sherry Bashor
Sherry Perry
Sherry Wise
Stacy Chesney*
Stephanie Itelman
Stephen Paul Brown
Steve Galante
Steve Kilpatrick
Steve Lenzo
Steve Melville
Steven Higgs
Steven Richards
Steven Westberg
Stu Knight
Sue Dixon
Susan Dowd
Susan Konarske
Susan Mackay Smith
Susan Palmer
Susan Richardson
Susan Schneider
Susan Strong
Susan Wallace
Suzan & George
Crochet
Suzanne Alvord
Symba Quinones
TaMara Christensen
Tamara Clark*
Taylor Moellers*
Temisha Elliott

Terence Lynch
Teresa Koransky
Teri Lindsay
Terri Bateman
Terri Johnson
Terri Terry
Terry & Jean Laverty
Terry & Linda Sullivan
Terry Cicero
Terry Thompson
Theresa Stiefel
Theresa Zook
Therese A. Landin
Thomas Closs
Thomas McKeen
Thomas Murphy
Thomas Richardson
Timothy R Smith
Timothy S Moor
Todd Chemrinow
Tom & Lisa McHenry
Tom Hunsinger
Tom Kennedy
Tom Perkins
Tom Ratty*
Tom Roode
Tonya Aultman-Bettri
Tracy Jsnes
Trevor Kregg
Tristan
Valerie Webster
Vaneta Babcock
Vickers Myers
Vicki Moore
Victoria McElhone
Victoria Morris
Wayne Boncyk
Wayne Forman
Wendy Recore
William Browning
William K Kitamura
William Klein
Yu Zhang
Zoe Nhleko

*BUILDING BLOCKS
MEMBER

Donors from January 1 -
December 31, 2022

We are grateful for all of
our donors and regret
any omissions.

STAFF

KIA ABDOOL
CEO

CATHERINE ARENSBURG
Supportive Services
Manager

ANTONIO BARREIRO
Chief Operating Officer

NAOMI BOLTS
HR Data Coordinator

TARA CASTANEDA
Eastern Plains Program
Manager

TIERNI CHUN
Youth & Community
Engagement Coordinator

NATE EDGE
Director: Energy & Water
Conservation

DANAE EDWARDS
Supportive Services
Navigator: SFR

CARLYE ELSTUN
YouthBuild Field
Coordinator: Health &
Wellness

GWEN FARNSWORTH
Director of Development
& Marketing

MELISSA FLORES
Operations Manager

PRASHAN GURUNG
HR Specialist

ELENA HERNANDEZ
Energy and Water Climate
Ambassador Specialist

EMILY HOLMES
Senior SFR Land
Conservation Program
Coordinator

MAR'QUIS HUBURT
YouthBuild Program
Coordinator

HEATHER HURD
Director: Corpsmember
Advancement &
Compliance

XAVIER JENNINGS
Director: YouthBuild

SANDRA LITTLE - High
School Equivalency
Instructor

JULIA LOBATO
Development & Marketing
Coordinator

MATT LUZINCOURT
Denver Land Conservation
Project Coordinator

LALITA MARTIN
SFR Land Conservation
Program Coordinator

**GE'VON MARTIN-
COLLINS**
Denver Land Conservation
Program Coordinator

DANIEL MARTINEZ
- YouthBuild Field
Coordinator: Construction

SAMANTHA MOONEY
Energy & Water Education
and Outreach Coordinator

CLAIRE MORRISSY
Regional Manager: Denver
Land Conservation

LENE NICHOLS
Director of Finance

AMBER PALMERI
Director: Program
Initiatives

DEMETRIUS PARKER
Program & Pathways
Manager: YouthBuild

MIA RENEE
Supportive Services
Navigator

JESSE ROEHM
Director: Land
Conservation &
Operations

ALYSSA ROMERO
Accounting & Grants
Manager

CJ RUNGE
Director: SFR Land
Conservation

JULIA SCHALLER
Youth & Community
Engagement Manager

JASON VAUGHN
Supportive Services
Associate Manager

OLYMPIA VIDA
SFR Land Conservation
Project Coordinator

COLLEEN WALLACE
Development Manager:
Grants

BOARD

MIKE SMITH, CHAIR
Resources Shareholder,
Brownstein Hyatt Farber
Schreck

LAUREN C. BUEHLER,
FORMER CHAIR
Assistant General Counsel
Xcel Energy

ROB GILLIS, TREASURER
Portfolio Manager, Dream

TAMARA CLARK,
SECRETARY
SWAP Specialist, School
to Work Alliance BOCES

ALE SPRAY
Business Development
Manager, Mortenson

BRENT MCDANIEL
Senior Web Content
Developer, SWCA
Consultants

DANI MONTOYA
Senior Communications
Officers, Private Family
Officer

DAYLE JONES
Construction Executive,
Turner Construction

ELOY MARINEZ
Journeyman, Mtech

HALEY EASTON NEAL
Associate General Counsel,
Leprino Foods

JOJO LA
Policy Advisor, Colorado
Department of Public Health
& Environment

JOSH EWING
VP Government Affairs,
Colorado Hospital Association

KYLE HENDERSON
Executive Vice President,
Credit FirstBank

LESLIE PICKARD
Director of Recreation Parks
and Recreation, City &
County of Denver

MATT MONTOYA
Corporate Associate,
Holland & Hart

NICOLE JONES
Program Administrator Youth
and Family Services, City &
County of Denver

STACY CHESNEY
Director of Public Affairs,
Denver Water

STEVEN HUSSAIN
Vice President, Workforce
Programs & Community
Relations, Prologis

SOUTHERN FRONT RANGE ADVISORY COUNCIL MEMBERS

TAMARA CLARK
SWAP Specialist, School
to Work Alliance BOCES

MELISSA MARTS
Administrator, Pikes Peak
Council of Governments
Program Development

MCKENZIE CARMACK
Manager, Pikes Peak Outdoor
Recreation Alliance Program
and Operations

GILLIAN ROSSI
Director, City of Manitou
Springs Parks & Recreation



MILE HIGH
YOUTH CORPS

